

# 2D Barcode Scanner

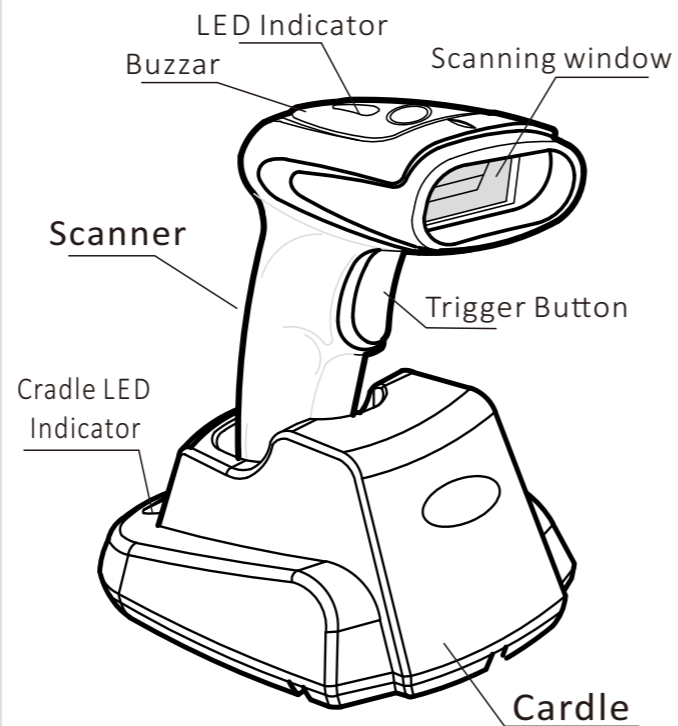
## Quick Start Guide



- Contents:
- Barcode Scanner
  - Cradle
  - Quick Start Guide
  - USB / RS232 Cable
  - Power Adapter (Rs232 only)

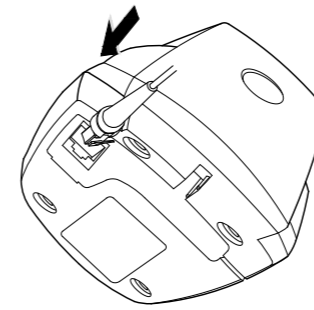
No.:1230247021 v1.2

## 1 Scanner overview

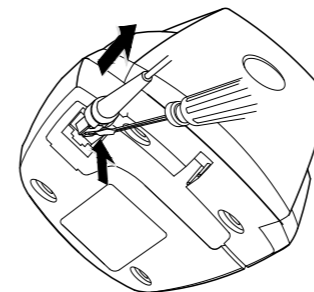


Note: Product appearance depends on goods

## 2 Cable plug&Unplug



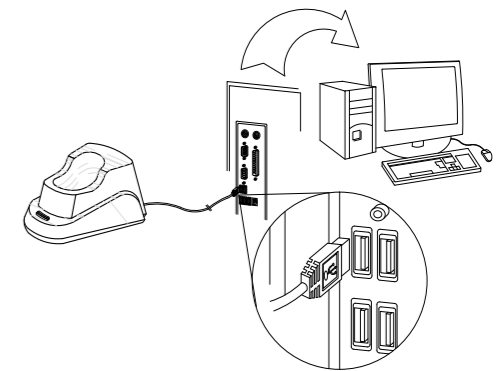
① Plug as picture above



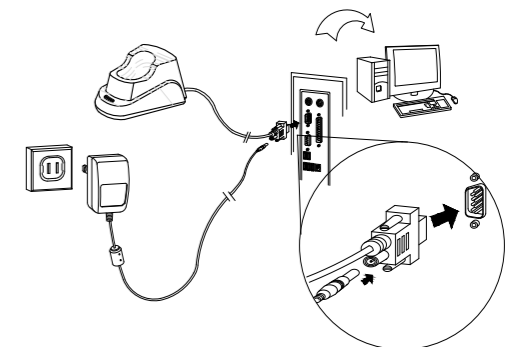
② Press the buckle click, then pull out the cable

## 3 Cable connection guide

(1) USB Data cable



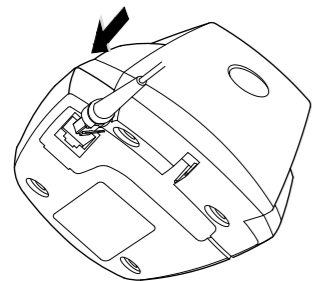
(2) RS232 Data cable



## 4 Pairing Guide Method

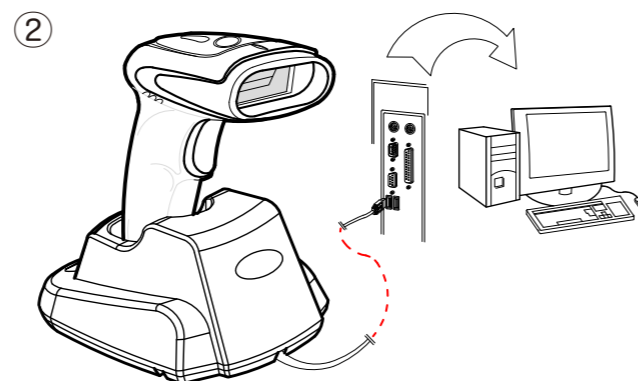
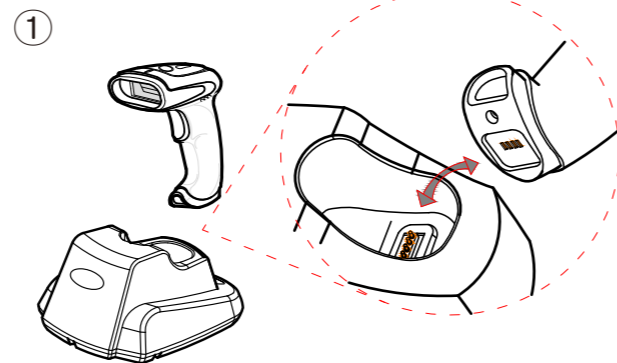
**First step:** Insert the cable to the cradle as below picture, the green light of the cradle will be flashing (when this green light is always on, please insert the cable again to do the pairing)

**Second step:** After insert the cable to cradle, scan the below "pairing code" within 4-10s, after the green light on scanner and cradle stay green, the pairing is successful.

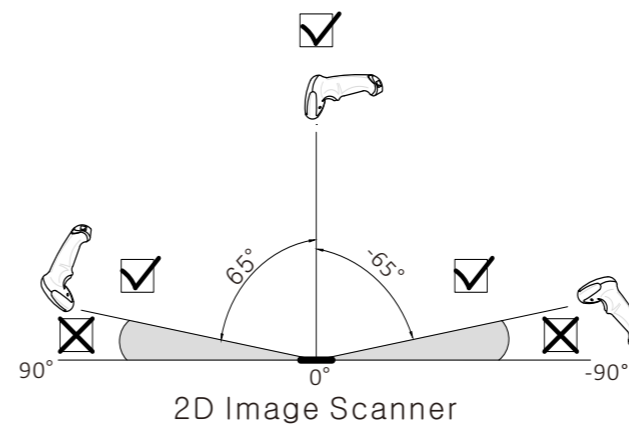


Pair in one step

## 5 Charging method



## 6 Scanning Angle



The aiming beam should be centered over the bar code, but it can be positioned in any direction for a good read.



## ? Troubleshooting Q&A:

Q1: After scanning data, the scanner has sound of "du du du" three times means the data not uploaded.  
A1: Pair again Follow "Pairing" process.

Q2: No data upload after scanning, but no warning tone.  
A2: Scan "Realtime mode" barcode (in the "working mode").

Q3: Press the button, no beam comes out of the scanner.  
A3: Low power, please charge the scanner.

# Wireless Settings

This part is valid for wireless settings only

## ① Defaults Parameter

The default setting allows the scanner to be restored to the factory setting state.

### Set up process :

- 1 Scan the bar code of "Enter Setting".



Enter Setting

- 2 Scan the bar code of "Restore Defaults".



Restore Defaults

- 3 Scan the bar code of "Exit and Save".



Exit and Save

## ② Working mode

**Real time mode:** Scan and transmit, data will automatically lost if upload failed.

**Cache mode:** Same as real time mode if connection normal. Scan bar codes will be automatically restore if connection failed. Will upload one by one if connection return as normal.

**Inventory Mode:** Scanning bar codes will be restored without upload.

**Configuration method:** Scan the function bar code directly.



\*Real-time mode



Inventory mode



Cache mode

## ③ Inventory Setting

This part is valid for inventory mode only

**Upload data:** Bar code data will transmit to terminal once scan this bar code.

**Date sum:** Scan "Data sum" bar code to check the scanner restore data sum.

**Clear data:** Scan "Clear data" and clear all the restore data in scanner.

**Configuration method:** Scan the function bar code directly.



Upload data



Data sum



Clear Data

## ④ Sleep Time Setting

The sleep time means the time between the last operation move and auto turn off the scanner. User able to scan the corresponding bar code of the sleep time which is needed to accomplish the sleep time setting.

### Set up process :

- 1 Scan the bar code of "Sleep Time".



Sleep Time

- 2 Scan one of the bar code below as sleep time.



60s



5min



15min



30min

- 3 Scan the bar code of "Exit and Save".



Exit and Save

## ⑤ Suffix

### Set up process :

- 1 Scan the bar code of "Enter Setting".



Enter Setting

- 2 Scan the bar code of "Custom Suffix".



Custom Suffix

- 3 Scan one of bar code below as suffix



None



\*0x0D ( CR )



0x0A ( LF )



TAB

- 4 Scan the bar code of "Exit and Save".



Exit and Save

## ⑥ Numeric Keypad

This functions is useful when using non-English OS and Keyboard layout.

**Configuration method:** Scan the function bar code directly.



Enable Numeric Keypad



\*Disable Numeric Keypad

## Light

LED Status	Description
<b>Scanner</b>	
Green light on	Power on/ Working normally
Red light blinks	Pairing match
Green light blinks once	Upload successfully
Red light blinks three times	Upload failed
Red light on	Low battery
Blue light on	Charging normal
Green light on	Charging complete
Green light blinking	Pairing unsuccessful

### Cradle

Green light blinks 30s	Pairing state
Red light on	USB identify failed
Green light blinks once	Uploaded successfully
Green light on	Working normally

## Buzzer

Scanner beeper mode	Description
Four Beeps	power On
Short three beeps	Pairing successfully
Short one beep	Scan and transmit successfully
Short three beeps	Data upload failed
Short one beep	Power off
Long short beep	Enter Setting Mode

Craddle beeper mode	Description
Four Beeps	power On
Short one beep	Scan and transmit successfully